

CREATING ECONOMIC PROSPERITY



annual report  
CREATING ECONOMIC PROSPERITY





## contents

■ Foreword from the Chair	4
■ Priorities for 2019/20	6
■ Major Investments Map	9
■ Skills and Labour Market	10
• Skills Advisory Panel	10
• Labour Market information	10
• LMI Guides	10
• District Snapshots	11
• Building the Workforce of the Future	11
■ Local Growth Fund	12
• MIRA Technology institute	12
• Market Harborough Line Speed Improvement	12
• M1 Junction 23/A512 Improvement Project	12
• Leicester College Skills and Innovation Centre	12
• Apollo Court Business Park	12
• Space Park Leicester	13
• North City Centre Accessibility Improvement	13
■ Growing Place Fund Case Study: Optimus Point	13
■ European Structural and Investment Funds Programme	14
• ERDF	14
• ESF	14
• EAFRD	15
■ Enterprise Zones	16
■ Energy infrastructure Strategy	18
■ Business Gateway Growth Hub	20
■ Enterprise Adviser Network and Careers Hub	21
■ Communications and Engagement	22
■ LLEP Board Members	24
■ Governance	25
■ Priorities for 2020/21	26





## Our vision

“ Create a vibrant, attractive and distinctive place with highly skilled people making Leicester and Leicestershire the destination of choice for successful businesses. ”



## Foreword from the chair

It is with great pleasure that I introduce the Leicester and Leicestershire Enterprise Partnership Annual Report for 2019-20. The report captures the wide range of activity undertaken by the LLEP and demonstrates the economic impact we are making across the region.

The LLEP’s remit is to drive economic growth of the local economy. With our partners and stakeholders, we have striven to deliver an environment where businesses can increase productivity, create jobs and shape the future.

Our key priorities for 2019-2020 were:

- Delivery of the LGF, GPF, Business Rates Pool and ESIF programmes
- Develop and launch our Local Industrial Strategy

- Delivery of the MIRA Technology Park and Loughborough and Leicester Science and Innovation Enterprise Zones
- Deliver our Business Gateway Growth Hub and Enterprise Adviser Network projects

Our achievements against these priorities are outlined in this annual report.

We’ve supported significant infrastructure developments across the area via our Local Growth Fund investments. Our £20m investment in Waterside Leicester has supported this major regeneration project and seen the construction of new homes, commercial and office workspace and public realm improvements.

We also invested £8.1million towards the construction of a brand-new facility focused on Earth observation, first-class teaching and laboratory facilities and business workspace at Space Park Leicester. Ground was broken on the site and construction has commenced on this exciting project delivered in partnership with the University of Leicester.

We presented our Local Industrial Strategy (LIS) to government in December 2019. The document highlights key opportunities for growth, and we look forward to working in partnership with government to realise the economic potential of Leicester and Leicestershire.

In January 2020 the UK formally left the EU but current rules for trade, travel and business continue to apply until the end of 2020. It is imperative that businesses prepare for the new trading arrangements and our Business Gateway Growth Hub will continue to offer the support and information businesses

need to compete in a global market.

We have reviewed and improved our governance structures during 2019, and this year have welcomed three new female Directors to the LLEP board, ensuring our commitment to diversity is fully met.

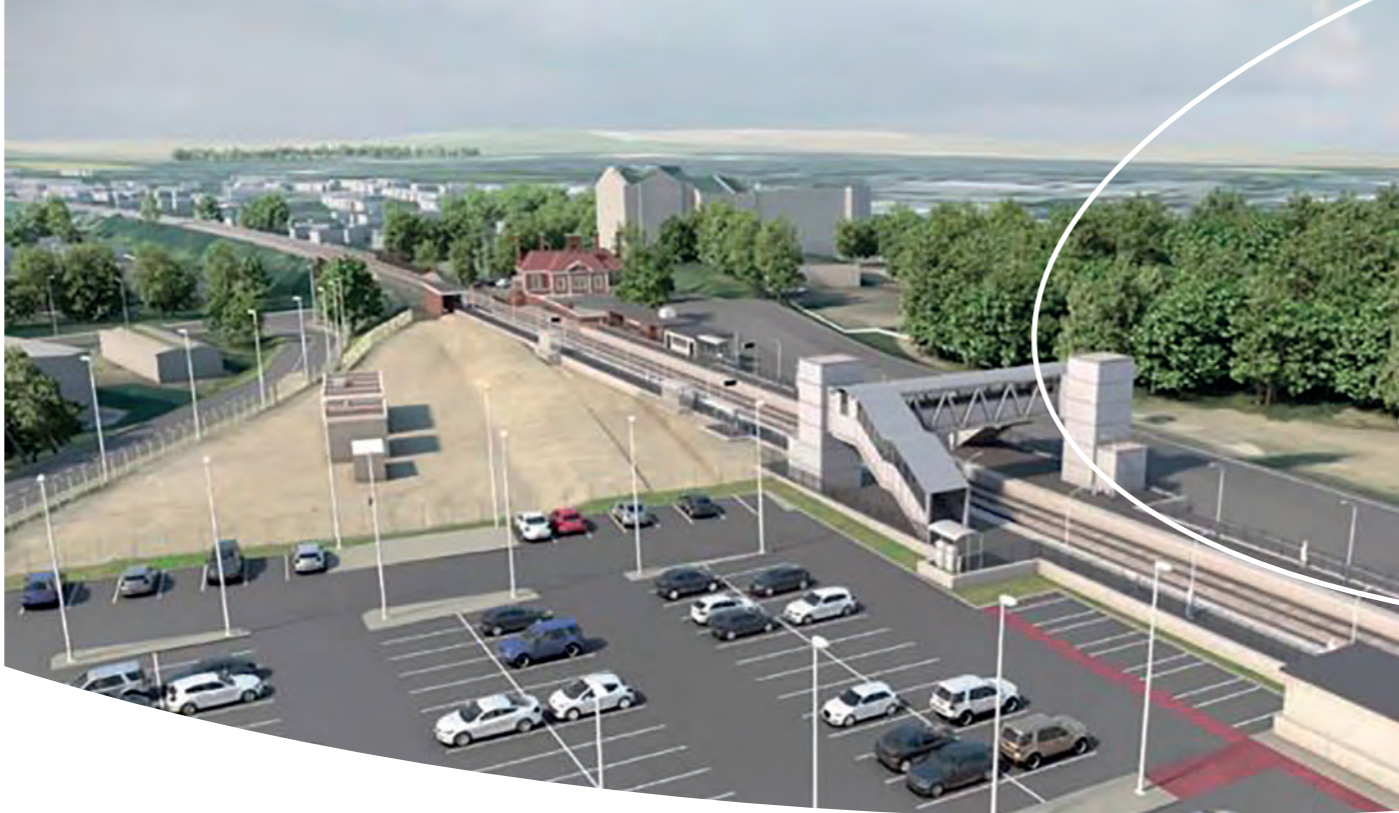
In March the UK faced one of the most challenging periods known in modern times with the Coronavirus pandemic. The whole UK economy has shut down and we are all facing huge uncertainty.

This is a critical time for our local economy, but we are optimistic that following uncertainty will come opportunity. Never has the role of the LLEP been more important than it will be to rebuild our economy and once again make Leicester and Leicestershire a great place to live and work.



**KEVIN HARRIS**  
Chair of the LLEP Board of Directors





## Priorities for 2019/20

This annual report highlights some key achievements against the priorities we set at the beginning of the year.

### Local Growth Fund (LGF) Programme

One of our key priorities for 2019/20 was to deliver our fifth year LGF allocation of £12.93 million. From the 20 funded LGF projects, a total of 11 projects have completed their funded activity, and all 20 projects remain subject to regular monitoring.

### Enterprise Zones

We continued to support the award-winning MIRA Technology Park Enterprise Zone and the Loughborough and Leicester Science and Innovation Enterprise Zone. Working closely with our public sector partners we have facilitated investment into the sites to drive forward their development and undertaken activities to support the marketing and inward investment programmes of the sites.

### Growing Places Fund (GPF) Programme

By the beginning of 2019 we had awarded 10 loans totalling £13.5 million. Through successfully managing the repayments we've built a loan fund of £10.8 million for investment during 2020 in future transport, infrastructure and commercial development projects that can be accelerated with an injection of short-term loan funding.

### Business Rates Pool Programme

This funding, administered by the LLEP, is allocated to support the delivery of local authority priority projects and functions to deliver against the priorities of the prevailing economic strategy; driving productivity and growth of the Leicester and Leicestershire economy. The 2019/20 investment sum was upwards of £7 million and is currently being allocated to projects.

### European Structural Investment Funds (ESIF)

During 2019/20 we worked to commit our remaining £18.3 million allocation. We advertised final funding calls for projects under £5.4 million for the European Social Fund (ESF) and £12.9 million for the European Regional Development Fund (ERDF).

### Business Gateway Growth Hub

We worked with partners to secure a further £3.9 million ERDF and apply for an additional £1.8 million to expand partnership for delivery and the offer available to the businesses within Leicester and Leicestershire. The new offer includes a £1.4 million pot of grant funding. To further improve our offer to business we launched a new Business Gateway website.

### Careers Hub and Enterprise Adviser Network (EAN)

The team have made great progress with the Gatsby Benchmarks. These have been implemented in all schools and colleges that are part of the programme to ensure they meet the KPIs set for the Enterprise Adviser Network and the Careers Hub by the end of 2020.

### Local Industrial Strategy (LIS)

We reviewed the local economy in order to create a firm evidence base against which to write our LIS. The review was based

around the five Foundations of Productivity and four Grand Challenges set out in the national Industrial Strategy.

This review presented a series of conclusions that were used to prepare the key emerging economic priorities for our local area.

We presented our LIS to government for review in 2019 and will use it to guide the allocation of funding streams and any future spending from national schemes to support our local objectives.





## Major Investments

### 1 Leicester North West Major Transport Scheme

The Leicester North West Investment corridor programme totals £19 million. and aims to improve movement in and out of Leicester. Better use of the A50 and A6 corridors will mitigate the impact of growth elsewhere in the region. The completed road network will reduce congestion into Leicester and assist the efficient operation of local businesses.

### 2 Leicester Strategic Flood Risk Management Strategy

The Loughborough Road Bridge flood relief scheme is part of the River Soar strategic flood risk management project that is supported by a £7.5 million allocation from the Local Growth Fund.

### 3 National Space Centre Vision 2025

A £1.15 million extension to the National Space Centre was completed in December, part of a plan to improve the site and cater for an ever-increasing volume of visitors.

### 4 Commercial Workspace Pioneer Park

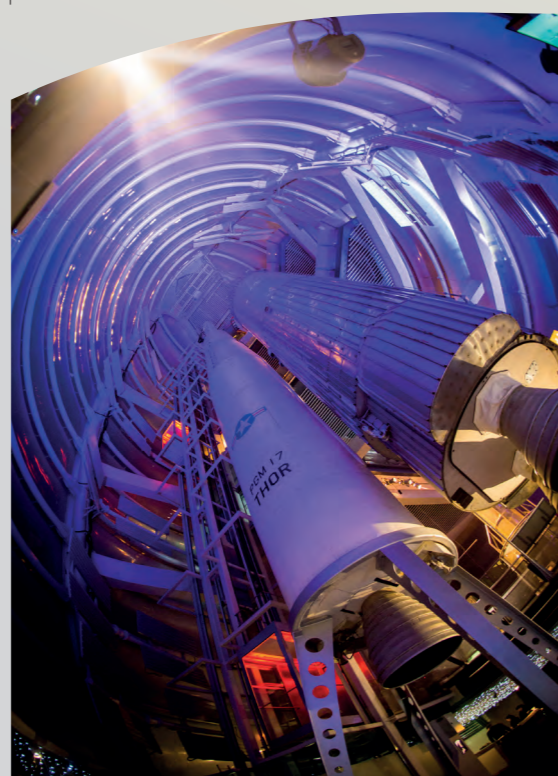
The project addresses the shortage of premises in Leicester for growing technology-based companies. It complements the adjacent Dock development. Tenants are already lined up to move to the large premises that will be provided by the new Pioneer Park workspace.

### 5 Space Park Leicester

Space Park Leicester broke ground in January. When it opens in 2021, it will be a world-leading centre of space research and technological development. The vision includes facilities for SMEs to carry out vital research in space-related industries. Space Park Leicester will be a key focus of the national space industry, helping the UK capture a growing share of a global space market that is projected to be worth £40 billion and create 100,000 jobs by 2030.

### 6 M1 Junction 23

This £27 million project will deliver junction and road improvements to the M1/J23 and A512 which will increase capacity and ease congestion, unlock land for new homes and employment and support the Loughborough and Leicester Enterprise Zone sites at Loughborough University Science and Enterprise Park and Charnwood Campus.





## Skills and Labour Market

### Skills Advisory Panel

The Skills Advisory Panel (SAP) meets quarterly and leads on identifying skills and employment priorities in our region to influence interventions and investment decisions now, and in the future, through undertaking skills analysis. To do this the SAP will:

- **Gather evidence** from high quality data sources on current and future skills and labour market challenges.
- **Reflect explicitly** on the potential impacts of global issues on local labour markets.
- Produce key headline outputs highlighting current and future local skills challenges.
- Develop action plans to address local skills and employment priorities and influence interventions and investment decision.

The analysis undertaken has resulted in the publication of a Skills Summary for Leicester and Leicestershire, which provides a robust and comprehensive overview of the skills landscape in the area which will feed into the development of a Skills Strategy and is reflective of the people priorities of the Local Industrial Strategy.

### Labour Market Information

We provide accessible labour market information (LMI) to better inform partners, stakeholders and providers about opportunities across Leicester and Leicestershire.

#### LMI Guides

We produce a young person's labour market guide for students, careers leaders, teachers and parents to provide an accurate, accessible summary of the range of key sectors and opportunities across Leicester and Leicestershire. This guide is refreshed annually, along with a region-specific lesson plan. To date, we have shared 18,000 copies of the 2019/2020 update with schools, colleges and other partners.

We also produce a labour market guide for adults, for partners who support adults into work. Both guides are available at: <http://bit.ly/worldofwork19-20>.

Our Skills Team, together with our partners at the Careers and Enterprise Company (CEC), held a Continuing Professional Development event for teachers on 26 September 2019, with a focus on the manufacturing sector. In addition, we produced a short film to promote manufacturing sector opportunities in August 2019.

The LLEP Skills Team and Enterprise Adviser Network work together very closely. In 2019, our jointly produced Employer Engagement guide for Schools and Colleges was adopted nationally by the CEC.

In May 2019 we organised three one-hour workshops on the local labour market for sixty Work and Pensions (DWP) advisers to further enhance their skills and labour market knowledge.

We distribute a monthly newsletter for schools and colleges with labour market updates, CEC news, help with meeting Gatsby Benchmarks and employer offers.

### District snapshots

This year, we enhanced our resource offer for schools, colleges and other stakeholders by creating snapshots of labour market information, broken down by district across Leicester and Leicestershire.

These show the most in-demand skills, the most-advertised vacancies, and specialist skills required by employers in an easily digestible infographic format.

On the reverse of each snapshot guide, there is a list of the top seventy local employers, listed either by turnover or number of employees. These summaries

will help to raise awareness of local skill needs. To download the guides, see: <http://bit.ly/lepdistrictsnapshots>

### Building the Workforce of the Future

We worked with key skills and education providers to create a toolkit for businesses. Our Building the Workforce for the Future publication highlights the benefits of offering experience of the workplace to businesses.

The guide was launched at the LLEP Business Breakfast in March. Download a copy at <http://bit.ly/lepfutureworkforce>





## Local Growth Fund

### MIRA Technology Institute

In April, MIRA Technology Institute (MTI), won the Innovation in Education and Training category in the Leicester Mercury Innovation Awards 2019. MTI was funded with £9.5million of our Local Growth Fund (LGF), and the award recognised it as an innovative collaboration between education and industry. The institute has been created to address skills shortages in the new disruptive technologies surrounding connected and autonomous vehicles and electric cars.

MIRA Technology Institute celebrated one year of operation with a celebration event in November. The keynote speaker, Professor Joe McGeough, President of the Institute of Mechanical Engineers (IMechE) spoke about the importance of industry and education working together and how historical collaborations using STEM skills had been responsible for helping to solve problems ever since the industrial revolution began more than 200 years ago.

Guests enjoyed demonstrations of the latest technology in action, including a showcase on the software behind trusted autonomous vehicles from the University of Leicester; robotic role-play to combat cyber security from HORIBA MIRA; 3D printing from North Warwickshire and South Leicestershire College; vehicle test laboratory cars from Loughborough University; and the Coventry University Formula Student race vehicle.

Since it opened, MTI has welcomed over 5,500 students and delegates. This includes over 360 studying for accredited qualifications from a Level 1 Institute of the Motor Industry certificate up to Masters' degrees, nearly 200 following apprenticeships at all levels and more than 3,000 automotive professionals taking part in professional development activities.

### Market Harborough Line Speed Improvement Programme

The main phase of the Market Harborough Line Speed Improvement Programme completed on schedule at the start of June. The project is part of the wider Midlands Mainline upgrade project to decrease journey time to London, and was funded with £3m of our LGF, and LGF allocations from D2N2 (£5m) and Sheffield City Region (£5m). The main phase saw six days of major engineering works at Market Harborough train station allowing almost 4km of newly laid track to be connected into the existing infrastructure. A new pedestrian bridge over the tracks, improvements to the platform and carpark have also been carried out as part of the project. The extended car park opened in mid-December with the whole project completed in the first quarter of 2020.



### M1 Junction 23/A512 Improvement Project

In August the M1 Junction 23/A512 improvement project got underway. The £27million project is part-funded with a £12 million allocation of LGF. It will deliver junction and road improvements to increase capacity and ease congestion, unlocking significant land for new homes and employment. The new road layout will support our Enterprise Zone sites in Loughborough (Loughborough University Science and Enterprise Park and Charnwood Campus), and housing and employment developments in the west of Loughborough and Shepshed.

### Leicester College Skills and Innovation Centre

In August, the Leicester College Skills and Innovation Centre fully completed all its obligations under its LGF contract and is our first LGF project to have been formally closed. The project received £3.27 million LGF and has supported over 600 students since opening its doors in September 2015.

### Apollo Court Business Park

A new industrial park opened in Coalville in October. Apollo Court Business Park provides space for both start-ups and expanding businesses. The project, which has been developed by Leicestershire County Council and is part-funded by £2.4 million LGF, consists of a range of high-spec industrial units from 1,000 to 9,000 sq. ft. (92-836 sq. m.) and is set to create up to 120 jobs. The construction company behind the build, Willmott Dixon, invested £437,000 in local communities through engaging with schools and colleges and ensuring much of the project spend was within 40 miles of the site.



### Space Park Leicester

Space Park Leicester was granted planning permission for the first phase of construction in August 2019. This University of Leicester facility, part-funded with £8.1 million LGF, is predominately focused on Earth observation. However, there will also be new first-class teaching and laboratory facilities, and business hosting that will allow industry partners to collaborate and innovate with university researchers.

Ground was broken at the site in January 2020 with completion due in 2021. We also awarded £5 million LGF to Leicester City Council to undertake the required infrastructure improvements to the site prior to the building construction works taking place.

### North City Centre Accessibility Improvement Programme

Work on a new road that will improve bus journey times out of Leicester city centre got underway in November. Part of the North City Centre Accessibility Improvement Programme, which was funded with £8.9 million LGF. The project will link Belgrave Gate with Mansfield Street, providing a quick route out of the city centre for buses leaving the Haymarket Bus Station. The programme forms part of an improved route for pedestrians between the city centre's two bus depots. In addition, it will provide a boost to businesses on Belgrave Gate and Church Gate as they will benefit from greater footfall and a much-improved street environment.





The Growing Places Fund is a £12.6 million loan scheme, designed to boost local transport, infrastructure and commercial development plans. It is directed at projects which are currently stalled, and its aim is to get them back on track for the benefit of the local economy. By the end of March 2020 we had awarded 11 loans totalling £17.5 million.

These loans have helped to create 979 homes; supported or safeguarded 3,650 jobs; developed over 15,000 square metres of new commercial floorspace; and have matched a total private investment of over £39 million.

## Growing Places Fund Case Study: Optimus Point

Located in Glenfield, Leicester, Optimus Point is a large industrial and residential development part funded by the LLEP's Growing Places Fund (GPF). Work began on the site in July 2012, and is now nearing full occupancy. Major firms Everards, Mattel, Boden, Geodis, James Latham, Geary's Bakeries and DPD have logistics hubs and manufacturing centres at Optimus Point. In addition, Sarstedt are soon to take occupation of their unit.

Before work could begin on the Optimus Point Development, the junction connecting the site to the A46 was improved, and alongside this, works to upgrade the A46 / A50 junction to aid the flow of traffic and goods to the site were also undertaken. This was achieved with £1.3 million GPF loan. Two further loan funding packages worth £3.1 million was paid to Wilson Boden, to enable them to fund the site access works before construction could commence. These works were completed by April 2014.

The residential development at the site is an extension of the popular Glenfield area of Leicester, and is known as 'Glenfield Park.' These new-build homes have formed a modern, sustainable community with close access to Brookside Meadows – a landscaped area of parkland with walking trails for residents and workers.

Optimus Point is ideally located next to key transport routes in the centre of the country. As such, it is set to become the main logistics hub for Sarstedt's UK operations. Sarstedt is a German company, and will be the newest member of the Optimus Point family. It will move into 61,640 sq.ft. of workspace at the site, from which it will operate its laboratory and medical equipment supply operation for the whole of the UK market.

Sarstedt's Optimus Point development was undertaken by Wilson Bowden, and includes core logistics facilities, ancillary office accommodation, car parking, a service yard, landscaped areas and room for future expansion.

Optimus Point as a whole is now close to full capacity, with approx. 1 million sq.ft. now occupied. The total amount of GPF loans committed by the LLEP to the overarching project was £4.4 million.

Optimus Point has the potential to create between 1500 and 2000 jobs for the local area. This is a major development for the economy of Leicester and Leicestershire, and we are proud to have been able to support it.



## Energy Infrastructure Strategy

In November 2018 we published our Energy Infrastructure Strategy identifying eight project areas within the three core themes of:

- Improving the energy efficiency of our homes and businesses, and supporting clean growth;
- Accelerating the shift to low carbon transport;
- Delivering clean, smart, flexible power.

Since launching the strategy, both Leicester City and Leicestershire County Councils declared climate emergencies, and all of the district and borough councils have either followed suit or released carbon statements. The UK Government has committed to zero carbon by 2050 and has started to develop accompanying commitments such as ending the production of new petrol and diesel cars by 2035.

### UK100 – Financing Energy in the Midlands

Both Leicester City and Leicestershire County Councils have committed to UK100 – ensuring 100% clean energy by 2050. UK100 brought a high-profile regional event to Leicester's City Hall that was supported by us. The event focussed on developing investable energy projects and sourcing private finance as well as having surgery sessions on more specific elements convened by experts.

### Leicester and Leicestershire-wide partnerships

A local Experts Reference Group has been established to ensure that expertise from across local authorities and universities is effectively used in order to support the low carbon agenda. Alongside this, local authorities are exploring collaborative solutions to various areas of the Energy Infrastructure Strategy.

### Energy Projects

We are working with partners to develop projects which aim to progress areas of our Energy Infrastructure Strategy. For example, electric vehicle (EV) charging provision across Leicestershire is patchy: there is a need to look at where chargers should be installed, and to work to ensure that our communities and businesses aren't held back from carbon reduction goals for want of infrastructure.

We are also supporting identification of suitable sites for an increase in renewables working with businesses, local authorities and communities.

We are working with communities through the Midlands Energy Hub to highlight the opportunity to access the Rural Community Energy Fund. This fund can pay for feasibility studies and business cases for community-led renewable energy projects. As this work develops it will feed into national and local government policy and inform delivery of our Local Industrial Strategy and local decarbonisation plans.





# European Structural and Investment Funds Programme (ESIF) 2014-20



The summer of 2019 saw the released of our final local calls under the ESIF programme for the European Regional Development Fund (ERDF) and European Social Fund (ESF). All uncommitted funds following these calls were returned to the government. The intention is that a National Reserve Fund will be released under each of the three funds including the European Agricultural Fund for Rural Development (EAFRD) which closed to projects on 1 May 2019.

## ERDF

In June 2019, we released the following four calls under each priority axis with the aim of committing all of our ERDF funding:

**TABLE 1: LLEP Indicative Allocations**

Priority Axis	Description	Allocation	Committed	Call Value
PA-1	Research & Innovation	£11,129,088	£8,679,088	£2,450,000
PA-2	ICT	£5,469,089	£4,507,989	£890,000
PA-3	SME Competitiveness	£28,928,296	£22,608,269	£6,320,000
PA-4	Low Carbon	£12,810,342	£9,463,342	£3,347,000
		<b>£58,336,374</b>	<b>£45,329,815</b>	<b>£13,007,000</b>

We received 17 applications totalling £16 million with two failing the ERDF managing authority's (ERDF-MA) eligibility gateway assessment. Of these, 12 were endorsed by our ESIF Committee at their meeting in November totalling £10.7 million, and have now been invited to submit a full application. These are currently in appraisal with contracts expected to be awarded in the

Autumn of 2020.

We had hoped to allocate all remaining funds under PA-3 into our local financial instrument – the Midlands Engine. The decision was taken, however, by the ERDF-MA to pool all remaining funds into the National Reserve Fund and invite all of England's financial instruments to apply.

**TABLE 2: ERDF Funding Endorsed**

Priority Axis	Description	Applications Received	Applications Endorsed	Total Funds	Funds Returned
PA-1	Research & Innovation	4	4	£2,450,000	£0
PA-2	ICT	1	1	£890,000	£0
PA-3	SME Competitiveness	9	7	£4,950,158	£1,369,842
PA-4	Low Carbon	3	2	£2,472,339	£874,661
		<b>17</b>	<b>14</b>	<b>£10,762,497</b>	<b>£2,244,503</b>



**TABLE 3: Our ESF Programme**

Investment Priority	Description	Allocation	Committed	Returned Funds
IP-1.1	Unemployment Support (Young People)	£13,186,720	£16,649,484	£0
IP-1.2	Unemployment Support	£4,579,598	£3,737,000	£842,598
IP-1.3	Youth Employment Initiative (YEI)	£8,526,000	£599,369	£7,926,631
IP-1.4	Active Inclusion	£9,163,027	£10,000,000	£0
IP-2.1	Sector Skills	£18,194,497	£16,167,187	£1,827,310
IP-2.2	Lifelong Learning	£3,813,079	£1,973,814	£1,839,265
		<b>£57,842,822</b>	<b>£49,126,854</b>	<b>£8,336,067</b>



We have returned £8.3 million to government due to the lack of local match funding for open calls. We have successfully matched most of our programme with co-financing from the Education, Skills and Funding Agency, Dept. for Work and Pensions and the Big Lottery Community Fund.

final call closing in the spring of 2019. Following the decision to launch a National Reserve Fund, the Rural Payment Agency responsible for EAFRD announced a call worth approximately £70 million in November 2019 that closed on 16 February 2020.

Together with our county and district council partners, we held three events across Leicestershire in Bottesford, Melton Mowbray and Market Bosworth, with the aim of supporting local rural businesses seeking to apply. The response was very good and as a result we have received 12 applications seeking grants totalling £1.2million.

## EAFRD

This fund is a rural grants scheme and is managed very differently from ERDF and ESF. Our initial indicative allocation was £3.059 million. All calls have been managed from a national level, with our





## Enterprise Zones

### MIRA Technology Park

In April Mira Technology Park won the 'Setting the Pace' award at the UK Science Park Association (UKSPA) Awards 2019. This was in recognition of MTP's commitment to providing world-class facilities and exceptional research and development solutions for its tenant companies.

HanKuk Carbon, a world-leading composite material manufacturing company, opened its first European office in May at the technology park. The location at MIRA will enable them to capitalise on the growing cluster of connected autonomous vehicle and electric vehicle companies in the area, all of which have a requirement to reduce the weight of their vehicles.

### Loughborough and Leicester Science and Innovation Enterprise Zone

#### Leicester Waterside

Two new office buildings were completed as part of the Friars Mill complex in July. This has created an additional 100,000sq. ft. of modern office space in the Waterside area.

Construction work on the five-storey No.1 Great Central Square scheme completed eight weeks

ahead of schedule in mid-October. The building offers 33,000sq. ft. of office space in a prime location. Occupants will benefit from high-spec accommodation, strong road, rail and air links, and the business benefits of being in an Enterprise Zone.

Further stages of the development scheme include the creation of a 154-bed hotel, a 95-bed 'aparthotel' and the renovation and conversion of the Great Central Railway Station building, which will increase the size of Leicester's commercial centre.

#### Charnwood Campus

In early May, Charnwood Campus hosted a life sciences delegation from the City of Mentor, Ohio, USA. Mentor has become a focal point for US biomedical companies due to its proximity to the world-renowned Cleveland Clinic.

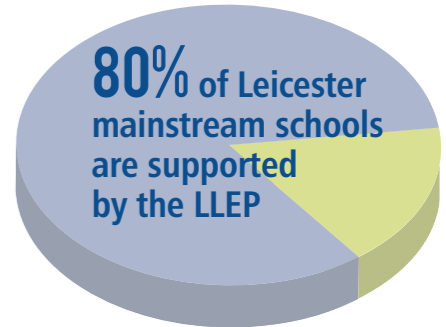
The site visit was facilitated by Medilink Midlands, which has developed a strategic collaboration with Mentor, Ohio to promote bilateral trade and investment. The delegation explored the campus, had a tour of 3M's new facilities, and took part in a roundtable discussion involving Charnwood Borough Council, East Midlands Chamber of Commerce, 3M, Charnwood Campus and the LLEP.

### Loughborough University Science and Enterprise Park

In November a topping-out ceremony took place to celebrate the latest milestone in the creation of a new HQ for leading software company The Access Group.

The new 109,000sq. ft. office building is the first to be constructed within this Enterprise Zone site. The development, expected to enable the creation of more than 500 jobs, will generate £1.6 million per year for frontline services for the authority.





## Enterprise Adviser Network and Careers Hub

Our Enterprise Adviser Network (EAN) continues to go from strength to strength, recognised nationally and overseas as an exemplar network of schools, colleges and business leaders. Over 80% of mainstream schools in Leicester and Leicestershire are supported by a LLEP Enterprise Coordinator and an Enterprise Adviser working strategically to make careers and enterprise a key aspect of school life.

The relationship between schools, colleges and EAs has led to some great events for young people and school staff throughout the year. Innovative approaches to careers education have included the use of local labour market information in subject areas and lesson plans, interactive sessions for young people on key sectors such as space and manufacturing and workshops for Careers Leaders and governors on developing their vision for careers in school.

We've continued to widen our engagement with schools and colleges through innovative platforms like our Skills for Tomorrow event. The event was aimed at Careers Leaders and practitioners, teachers and school heads to raise their awareness of Leicestershire's key employment sectors and what employers look for in young people.

We are committed to elevating the importance of the Careers Leader role. They are the key individual in a school who engages employers, creates a whole-school approach to careers and is accountable for careers and enterprise across their education establishment.

Working with the Careers and Enterprise Company we have engaged over 40 schools and colleges on Careers Leaders Training programmes

### Careers Hub

We are extremely proud of the 20 schools and colleges that make up the Careers Hub and the progress in meeting the Gatsby Benchmarks. This was recognised by the Secretary of State for Education during his visit to meet schools and employers in May 2019.

To further support and champion our Careers Hub we have a group of Cornerstone Employers, which are businesses that are invested in the successful and sustainable delivery of careers education for young people.

### Careers Speed Networking

Our fourth annual Career Speed Networking event took place in November 2019. This year was themed around 'Bright Futures' and created over 2,976 careers conversations between business volunteers and young people.

With over 130 employers and almost 250 young people it showcased the diversity of businesses and careers in the local area. Over 95% of young people felt more informed about their career choices following attendance and 100% of businesses said it was beneficial.

## Business Gateway Growth Hub

Our growth hub, the Business Gateway, has been operating for five years. During this time, it has had enquiries from over 5,700 businesses and intensively supported over 1,200. Growth hubs exist primarily because evidence indicates businesses that access external support do better than those that don't.

The Business Gateway provides businesses in Leicester and Leicestershire with simplified access to business support. Typical requests for support include sector specific advice to funding, performance planning, identifying suitable premises, help with implementing new ideas and support in up-skilling employees.

At the heart of our service is our team of dedicated business advisers, providing that single point of contact for established and start-up businesses alike. Our advisers offer tailored support by helping local businesses understand both opportunities and barriers to growth, and to signpost them to the most effective support across local, national and international resources.

A major element of our support services lies in the strong relationships and delivery partnerships we have developed across the public and private sectors. Our purpose is to ensure that small and medium enterprises (SMEs) receive impartial support, and to provide the right help for any client wherever they are based in Leicester and Leicestershire.



In addition to support offered by the business advisers there is also a comprehensive events and workshop programme focusing on specific business topics. These include business planning and strategy, finance, sales and marketing, HR and employment law, empowerment and wellbeing. During 2019-20, the growth hub delivered 45 workshop sessions which were attended by 865 delegates.



A new ERDF partnership contract commenced at the beginning of 2019, securing a further £3.9 million of funding to support more one-to-one advisers, as well as a £1.4 million pot of grant funding for eligible businesses to create jobs or to develop new products. The growth hub is also funded by the Department for Business, Energy and Industrial Strategy (BEIS) and these funding combinations ensure the service is free and impartial for businesses wishing to access support.



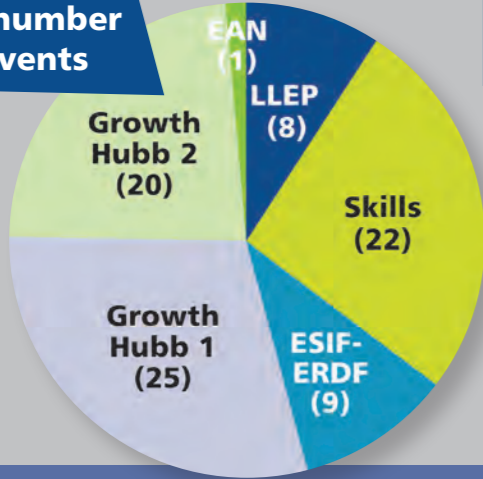
# Communications and Engagement

We continue to engage with the target audiences outlined in our communications plan and have successfully grown our audience over the last year.

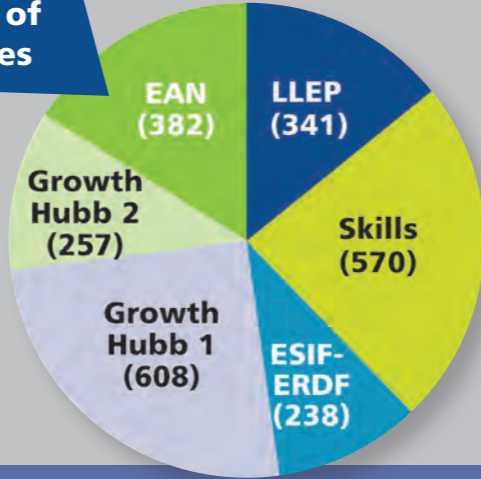
## 4 Key headline achievements

- 
① Organised 72 events and workshops across all LLEP programmes and projects attended by 2334 delegates
- ② 13 more events and 274 more delegates than previous year
- ③ Exhibited or presented at 41 partner events
- 
④ Featured 895 times in the media up 51% on previous year

Total number of Events



Number of delegates



### ESIF Funding Calls

**4 JULY** The ERDF funding call event was for a combined value of £12.92 million. The investment themes were innovation, ICT, SME competitiveness and low-carbon projects and technologies.

**30 SEPTEMBER** The £4.8 million ESF funding call event focused on digital skills, sector-specific skills for productivity and the Leicester Employment Hub.

### Leicester Business Festival The future of human mobility and regional connectivity

**4TH NOVEMBER** We worked with East Midlands Airport and MIRA to bring together experts from the world of transport; planners, strategists, operators and those directly involved in developing new technology and modes of transport. They shared their thoughts on the future of human mobility.



## SOME OF OUR KEY EVENTS DURING 2019-20



### LLEP Business Breakfast Briefings

**11 JUNE 2019** At the LLEP quarterly breakfast briefing in June we discussed careers education. The LLEP Careers Hub was looking to recruit Enterprise Advisers from businesses.

**5 MARCH 20** In March the breakfast briefing had a focus on skills. We relaunched a "Building the Workforce of the Future" toolkit, summarising how businesses can address skills shortages through experience of the workplace initiatives.



### Leicester Innovation Week

**24-28 FEBRUARY** We hosted a launch event for the 3rd Leicester Innovation Week which offers an exciting calendar of events for businesses, universities and support organisations to work together to access advice and funding and showcase the Leicester and Leicestershire area as a hub for innovation.

## LLEP board members



**KEVIN HARRIS**  
Partner, RSM UK  
Chair of the LLEP



**ANDY REED**  
Director, Sajeimpact  
Deputy Chair of the LLEP



**KAREN SMART**  
Managing Director  
East Midlands Airport



**EMMA ANDERSON**  
Director, Freeths



**DR NIK KOTECHA OBE**  
Director, Morningside  
Pharmaceuticals Ltd



**CHAS BISHOP**  
CEO, National  
Space Centre



**JASPAL SINGH MINAS**  
MD, Electrical Design  
and MFG Co. Ltd



**ANIL MAJITHIA**  
Chair, Voluntary Action  
LeicesterShire



**PROF. ROBERT J. ALLISON**  
Vice Chancellor & President  
Loughborough University



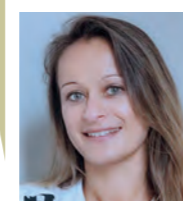
**NEIL MCGHEE**  
Director,  
Sempervox



**RANI MAHAL**  
Director, RM Kingsley



**ANNE-MARIE HUNT**  
Director of Commercial  
Banking, Natwest



**SONIA BAIGENT**  
Director, Assist Business  
Consulting Ltd



**VERITY HANCOCK**  
Principal and CEO,  
Leicester College



**CLLR JONATHAN MORGAN**  
Leader, Charnwood  
Borough Council



**NICK RUSHTON CC**  
Leader, Leicestershire  
County Council



**SIR PETER SOULSBY**  
Leicester City Mayor



**CLLR TERRY RICHARDSON**  
Leader, Blaby  
District Council

## Governance

Following the government's report on Strengthened Local Enterprise Partnerships, the Leicester and Leicester Enterprise Partnerships became a Company Limited by Guarantee on 8 April 2019.

Three additional posts have been added to our Board of Directors during 2019, increasing the number of private sector board members to twelve. In line with central government recommendations, one third of our directors are now female.

Following the company formation, our Local Assurance Framework (LAF) underwent a considerable redraft. Although the Articles of Association sets out how the company will operate, the LAF sets out in greater detail how the LLEP will be governed.

The purpose of the LAF is threefold:

- To define and set out the mechanisms by which the LLEP, the Accountable Body and Government can be assured that money is being spent at the right time, in the right way on the right things;
- To assure the collaborative nature of work between the Accountable Body and the LLEP in resource allocation decisions;
- To detail the governance arrangements, membership and roles and responsibilities of groups who are involved in the decision-making processes, in addition to the stages of approvals required to develop operating programmes to oversee all funding.

Building on the previous version of the LAF and encompassing the recommendations made by the Chartered Institute of Public Finance and Accountancy (CIPFA), the LAF clearly sets out the role and expectations of the Accountable Body and the S151 Officer. In summary, the S151 Officer now has a more formal structured role within the LLEP.

The accountable body also has a duty to ensure that the LLEP complies with all legal duties such as equality, social value, procurement, environment and state aid legislation.

Following the recommendation in the National Assurance Framework the LLEP is registered as a data controller with the Information Commissioner Office. However, as a non-statutory body we are not formally subject to Freedom of Information requests, although we will endeavour to comply with any request.

With a greater emphasis on transparency, the LAF sets a commitment to publish more information. We will publish all spend over £500 on a monthly basis along with a hospitality and gifts register. We will disclose the salaries of the senior management team and publish declarations of interest of board members and the senior management team.

Part two of the LAF details Programme Development and Management. Our approach to commissioning, programme development and monitoring will ensure key processes are in place to enable effective project and programme management. These will include systems to:

- Provide transparency and assurance arrangements.
- Set budgets, re-allocate funds, monitor and review programmes and initiate project interventions.
- Ensure robust and proportionate economic appraisal processes are in place to ensure value for money.
- Provide a critically robust review and challenge process through a series of gateways.
- Satisfy public procurement regulations, legal and state aid requirements.

Key changes to the revised LAF include publishing the assessment criteria for business cases; the requirement for all expression of interests to include a logic model, the expectation made around evaluations of LLEP-funded projects, and the commitment to using a programme management solution.

All projects are now required to have a state aid assessment and be reviewed by the Accountable Body before a funding decision is reached.

## Finance

We receive funding for our day-to-day core activity from National Government and local partners. In addition to a 2.5% management fee from programmes. The income we receive covers operational activities, designated projects and programme funding.

We have a strong, collaborative relationship with our Accountable Body, Leicester City Council. The Section 151 Officer and her nominated officer has financial and governance oversight of decisions made by the Board and Programme Board, ensuring effective review of governance over financial decisions. The Section 151 Officer regularly attends the Board and is invited to attend all Board meetings.

Income 2019/20	£000's
Grants	700
Local Authority Contributions	280
National and Local Project Income	741
Fees, interest and other income	518
<b>Total Income</b>	<b>2,239</b>
<b>Expenditure</b>	
Staffing	848
Running costs	326
Accountable Body costs	179
Programme Delivery	615
	<b>1,968</b>
<b>Net Surplus / (Deficit)</b>	<b>271</b>



## Priorities for 2020/21

The year ahead will be challenging, and we will do our utmost to ensure we recover from the economic impact of the global COVID-19 pandemic. There are also great opportunities to shape the economic future of Leicester and Leicestershire.

We will continue to manage our major funding programmes and implement our Local Industrial Strategy (LIS), support the delivery of the two Enterprise Zones, support local partners to secure European Structural Investments Funds, and deliver our Business Gateway Growth Hub, Careers Hub and Enterprise Adviser Network projects.

We will also continue to work with our partners to maintain and build a strong project pipeline aligned to our strategy.

We will actively support the Midlands Engine and the East Midlands Development Corporation including preparing a strong case for a Freeport Enterprise

Zone in the region. Continuing to develop strong relationships with local and national stakeholders and partners is essential for our success.

Our key priorities for 2020-2021 will be:

- Delivery of the Local Growth Fund, Growing Places Fund, Business Rates Pool fund and European Structural Investment Funds programmes
- Launch our Local Industrial Strategy and prepare a Skills Strategy
- Undertake and implement a review of LLEP governance
- Delivery of the MIRA Technology Park and Loughborough and Leicester Science and Innovation Enterprise Zone
- Deliver our Business Gateway Growth Hub
- Deliver our Careers Hub and Enterprise Adviser Network project

### Local Growth Fund (LGF) Programme

One of our key priorities for 2020/21 is to deliver our final year's LGF Programme allocation of £17 million. From the 20 funded LGF projects, a total of 14 projects have financially completed and another 6 projects are due to complete in 2020/21; M1 Junction 23 Improvements and Space Park Leicester are amongst them. All projects remain subject to regular monitoring.

### Enterprise Zones

We will continue to support the development and delivery of MIRA Technology Park and the Loughborough and Leicester Science and Innovation Enterprise Zone. Working closely with our public sector partners we will facilitate investment into the sites to drive forward their development and undertake activities to support marketing and inward investment activity.

### Growing Places Fund (GPF) Programme

To date we have awarded 11 loans totalling £17.5 million and through successfully managing the repayments we are able to offer loans of up to £6.96m in 2020-21.

### Business Rates Pool Programme

This funding, administered by the LLEP, is allocated to support the delivery of local authority priority projects and functions to deliver against the priorities of the prevailing economic strategy; driving productivity and growth of the Leicester and Leicestershire economy.

We will contract and monitor the £23 million that was allocated to revenue, small/large capital projects in 2019/20.

### European Structural Investment Funds (ESIF)

During 2020/21 we will commit our remaining ESIF allocation and support partners to access the national reserve fund.

### Business Gateway Growth Hub

The growth hub supports our ambition for the local economy in Leicester and Leicestershire to stimulate business growth and encourage innovation, to help address the productivity challenge faced by the UK.

The start of 2020/21 will see the Growth hub continue to work collaboratively with partners to ensure that businesses have access to the right information and support to enable them to come through the challenges faced as a result of the Coronavirus pandemic.

We will also continue to enhance the support on offer to business through 'investment readiness support' – direct grants and intensive support for businesses that can demonstrate ambitious growth potential.

Key developments for the year ahead includes the delivery of a series of events aimed at businesses who are "Ready to Grow", an intensive EU exit support service, Scale-Up and Investment Readiness

programmes, further development of our Peer to Peer Networks and the commissioning of a Regional Entrepreneurship Acceleration Programme (REAP).

### MIT Massachusetts Institute of Technology (MIT) – Regional Entrepreneurship Acceleration Programme (REAP)

We are one of six Local Enterprise Partnerships that will participate during 2020/21 in the UK Pilot of the MIT REAP Programme. The involvement of MIT REAP will provide the expertise, resource and support to enable us to work towards the ambition of driving up productivity by helping us to develop a local innovation ecosystem framework that will help us to address some of the issues within the local economy.

### Careers Hub and Enterprise Adviser Network (EAN)

The Government's Careers Strategy sets out a range of requirements for secondary schools and colleges. It includes the need to meet the Gatsby Benchmarks for Good Careers Guidance by the end of 2020. KPIs will be set for the Enterprise Adviser Network and the Careers Hub to achieve these targets.

### Local Industrial Strategy (LIS)

Our Local Industrial Strategy will be long-term, based on clear evidence and aligned to the UK's Industrial Strategy. Our LIS will identify local strengths and challenges, future opportunities and the action needed to boost productivity, earning power and competitiveness. Our LIS will also guide the use of local funding

streams as well as any future spending from national schemes.

### Skills Advisory Panel

The Skills Advisory Panel (SAP) leads on identifying skills and employment priorities in our region to influence interventions and investment decisions now, and in the future, through undertaking skills analysis.

The analysis undertaken so far has resulted in the publication of a skills summary for Leicester and Leicestershire, which provides a robust and comprehensive overview of the skills landscape in the area which will feed into the development of a skills strategy and is reflective of the people priorities of the Local Industrial Strategy.

This has allowed identification of emerging skills priorities and during 2020/21 the next stage will be to consult with the wider stakeholder network on how they can be taken forward in an Action Plan to address skills gaps and improve the productivity of the region.

